



NIRANKARI BABA GURBACHAN SINGH MEMORIAL COLLEGE

SOHNA ROAD, NCR DELHI, SOHNA-122103, TEL:-0124-2362269

(Affiliated to M.D. University, Rohtak)

Website: www.nbgsmc.ac.in

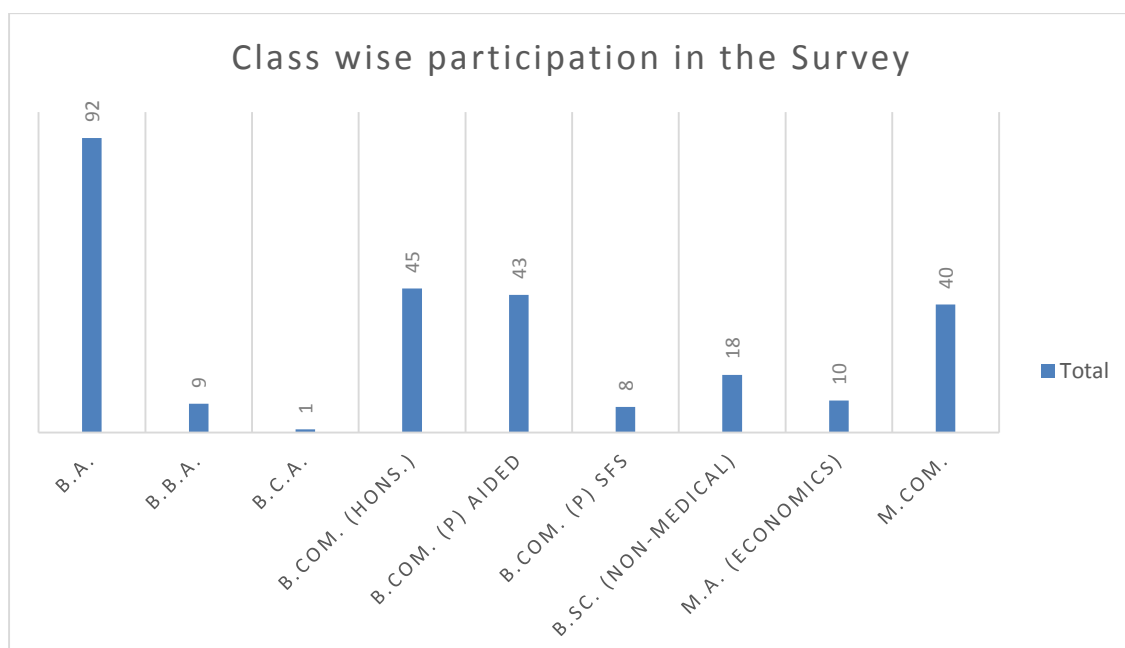
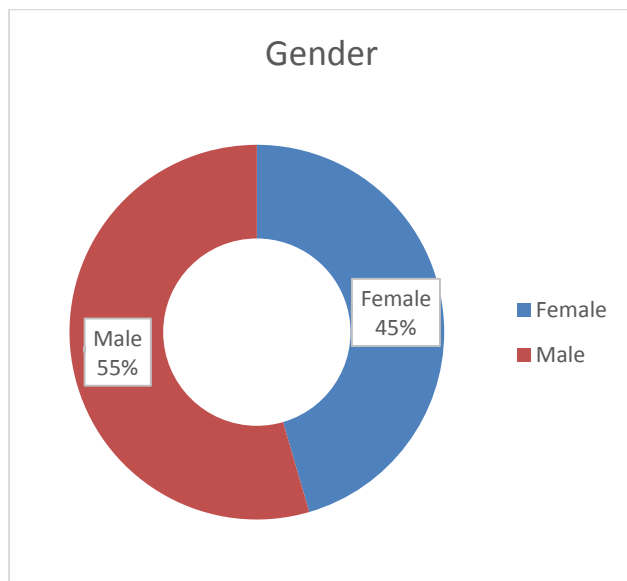
Email: office@nbgsmc.ac.in

Student Satisfaction Survey

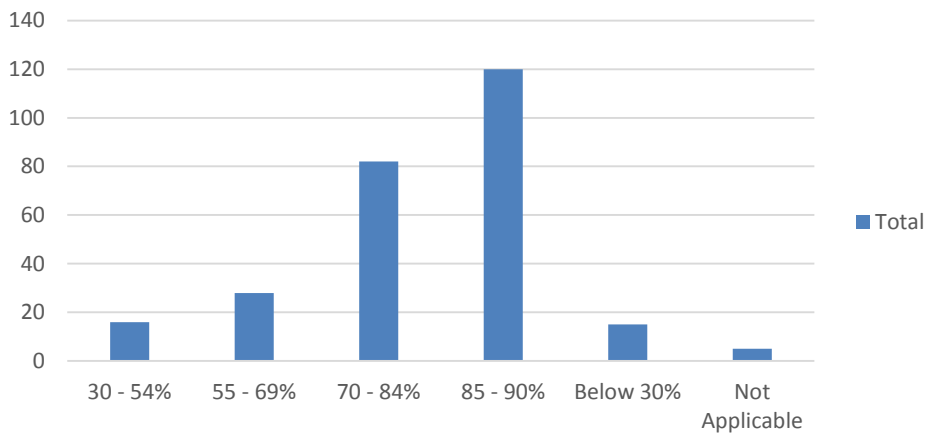
(Session 2020-21)

Duration of Survey: 29th July to 06th August 2021

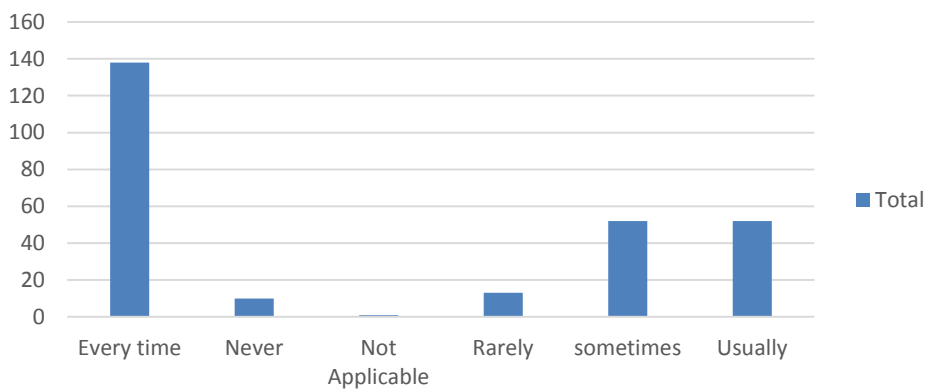
Responses received: 267 (20% of Student's Strength)



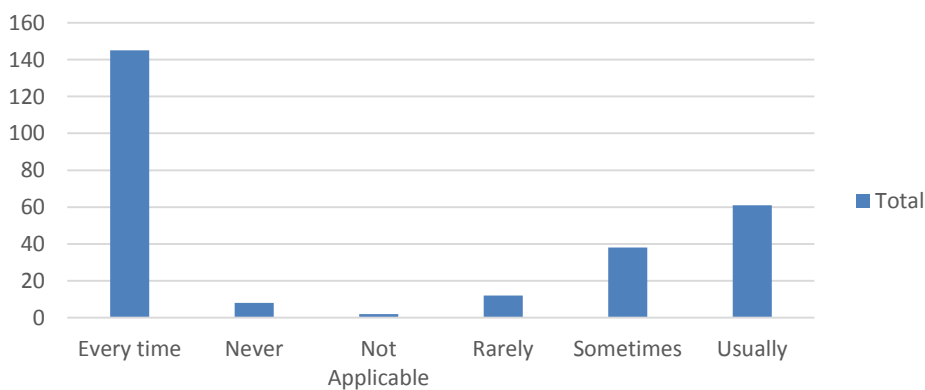
1. How much of the syllabus was covered by the faculty ?



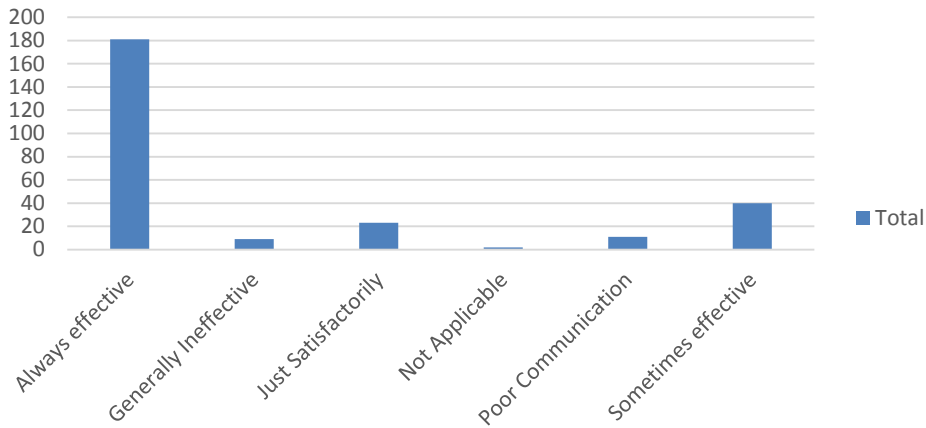
2. Does you teacher inform you about your expected competencies, course outcomes and programme outcomes?



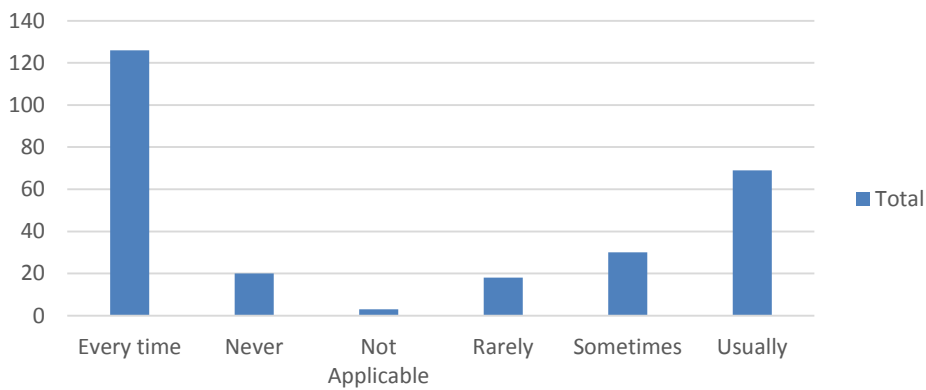
3. Does the teachers prepare well for the classes, such as teaching through examples and its applications?



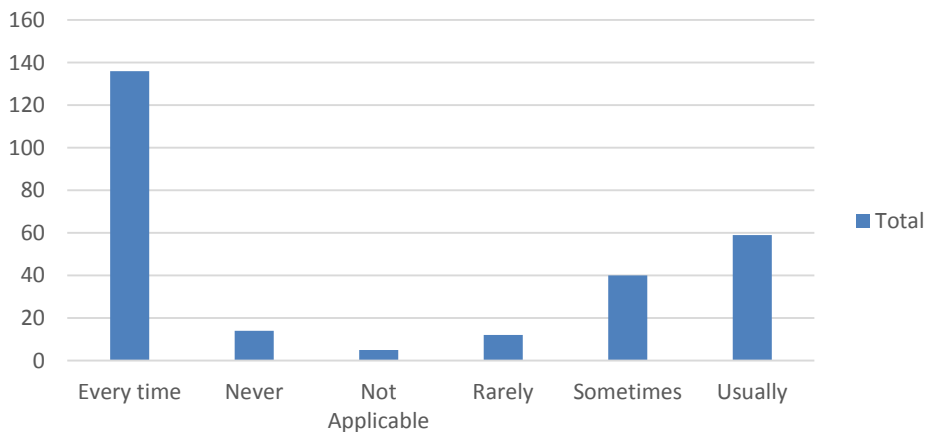
4. How well were the teachers able to communicate?



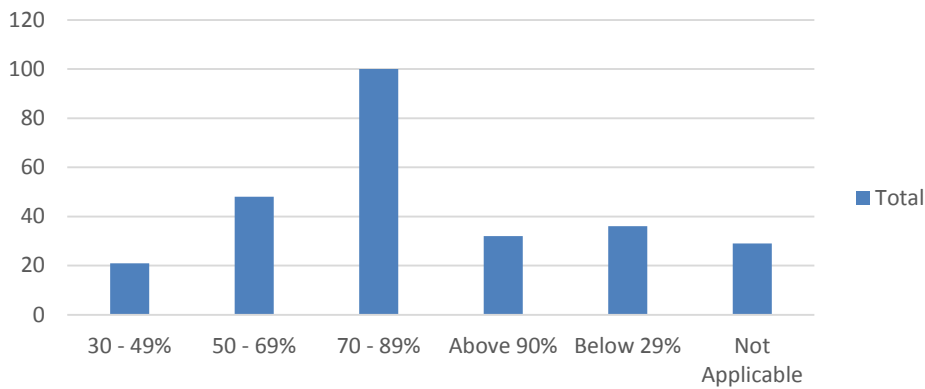
5. Does the teacher identifies your strengths / weaknesses and encourage you with providing right level of challenges?



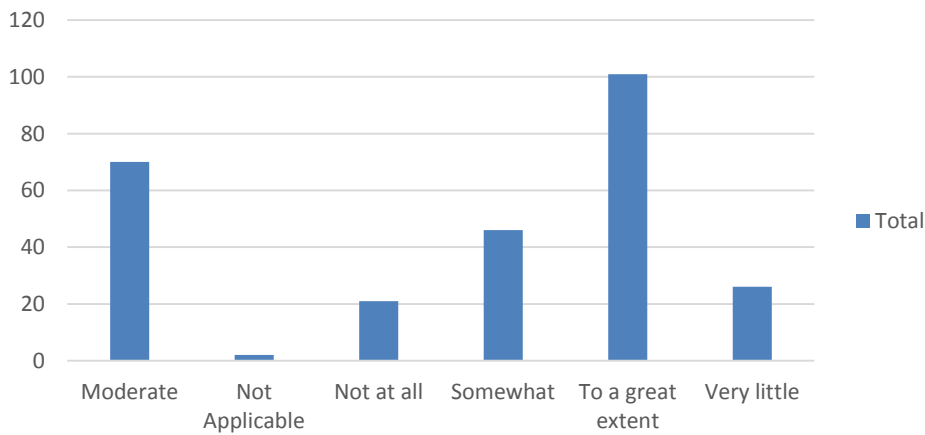
6. Was your performance in assignments / class tests discussed with you?



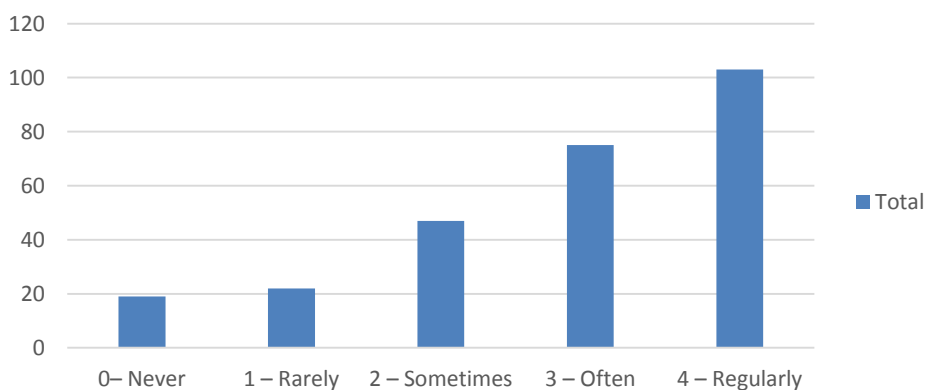
7. Does your teacher uses ICT Tools such as Projectors, Multimedia while classroom teaching?



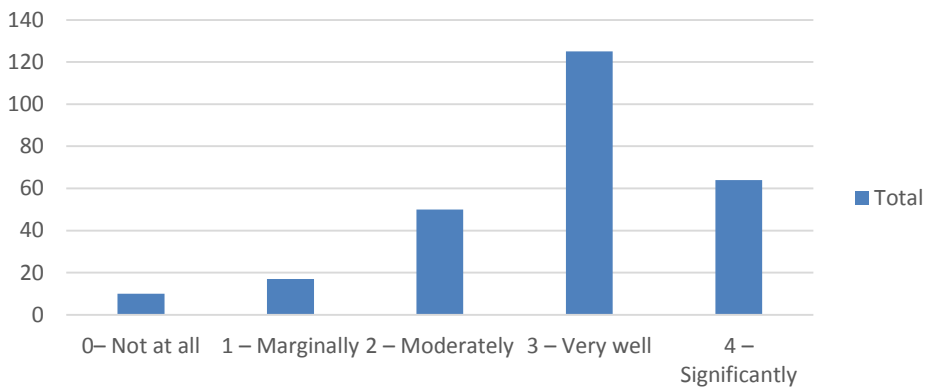
8. Are you satisfied with the quality of the E-learning materials provided by the faculty ?



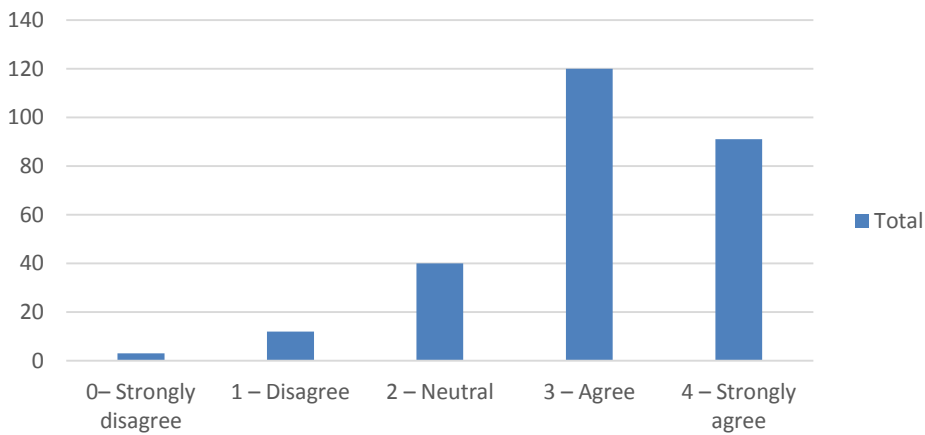
9. The institute takes active interest in promoting internship, student exchange, field visit opportunities for students.



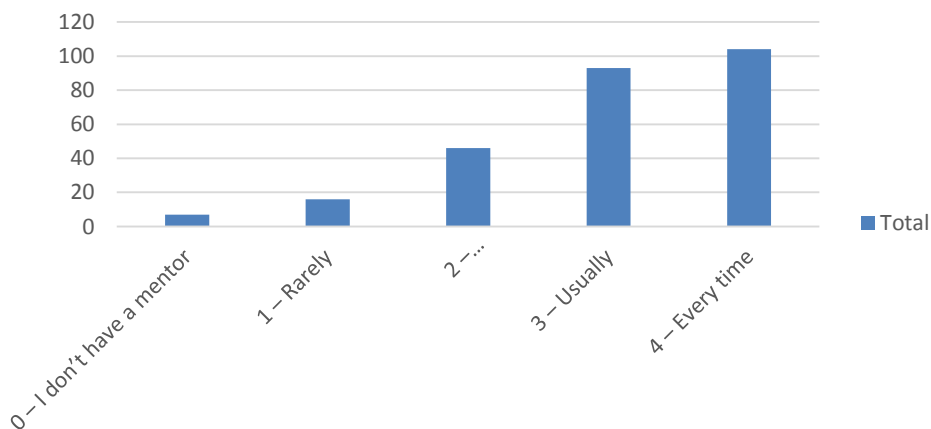
10. The teaching and mentoring process in your institution facilitates you in cognitive, social and emotional growth.



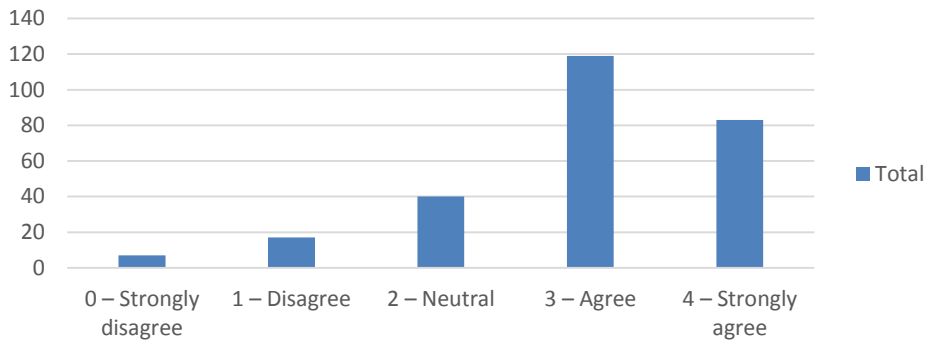
11. The institution provides multiple opportunities to learn and grow.



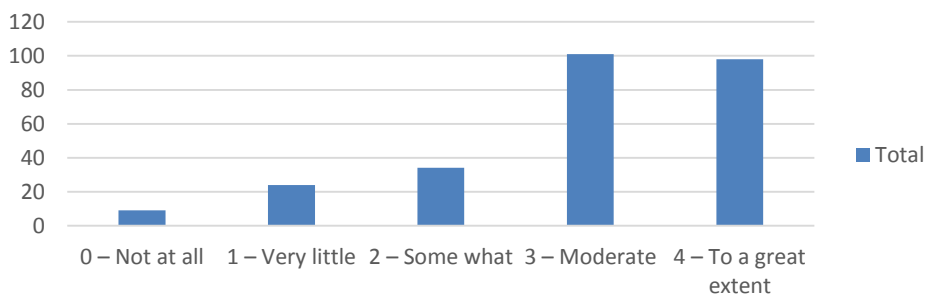
12. Your mentor does a necessary follow-up with an assigned task to you.



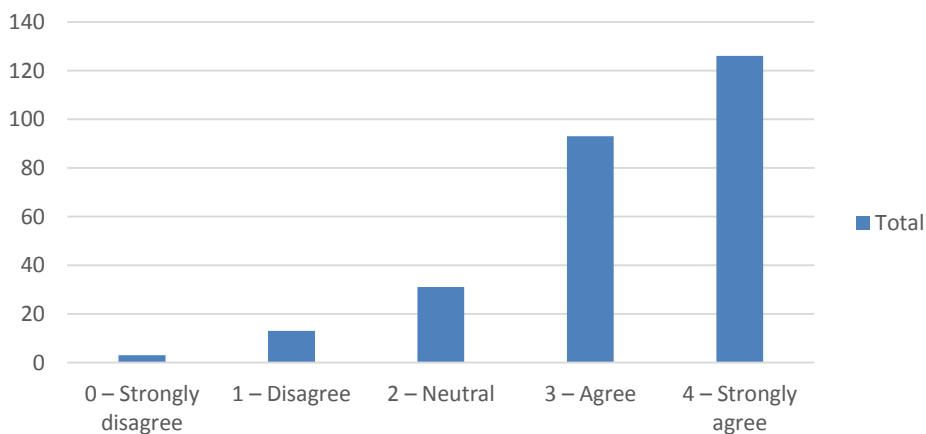
13. The institution makes effort to engage students in the monitoring, review and continuous quality improvement of the teaching learning process.



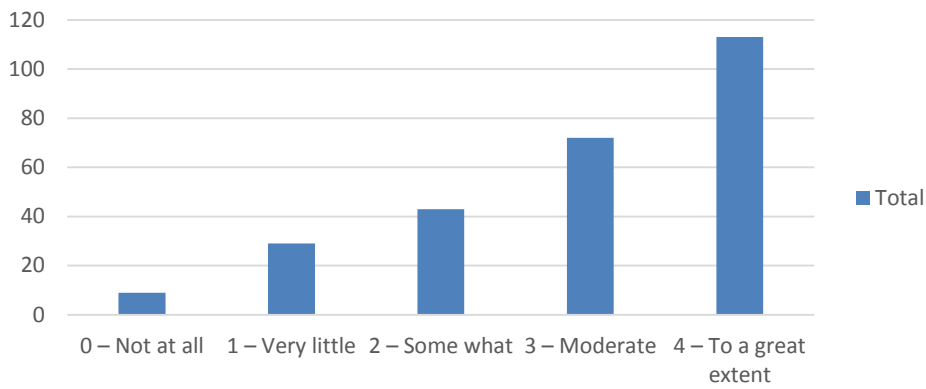
14. The institute/ teachers use student centric methods, such as experiential learning, participative learning and problem solving methodologies for enhancing learning experiences.



15. Teachers encourage you to participate in extracurricular activities.



16. Efforts are made by the institute/ teachers to inculcate soft skills, life skills and employability skills to make you ready for the world of work.



17. The overall quality of teaching-learning process in your institute is very good.

